



Jamtli

- always something to see and do

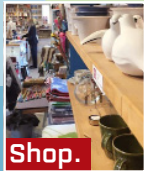
Discover all that Jamtli has to offer!
Visit permanent and temporary exhibitions, events and other activities. Take a walk through the open air museum with historic houses, farms and animals.

Jamtli Historyland

During summer, the open air museum comes alive as actors move into the farms and other historical areas.

Food, shop and accommodation

Have a good meal at Restaurant Hov or have lunch, or a coffee at the Jamtli Café. Buy a nice gift for a friend or something for yourself in Jamtli Butik. At Jamtli Hostel you are comfortable staying in Östersund in the year 1895.



Shop.



Café.



Hostel.



www.jamtli.com

Children's Railway

Lusåflo cabin

1942 Forest cabin

Timber floating

Children's Energy play

1942 Per Albin-torget - the craft

1895 Mountain farm

Sami hut

Sylstugan, mountain hut

Milkoland Children's Dairy

1975 Modern Society

Green Wave cottage

Cowshed

Retirement houses

The villa

Five Ants park

Children's Driving School

1956 Service station

1895 Näsgården farm

Bakehouse

Hammerdalsgården farm

Church and bell tower

Mill

Hovparken park

Dance pavilion

Restaurant Hov

1824 Courthouse Inn

Courthouse hill

Lill-Thomé

Gårdin & Persson shop

Photographer Oscar Olsson

Stage

Jamtli Hostel

Brånflo barn

Grand café

Brewhouse

Lignell room

Jamtli Café

Jamtli Shop

Hackås-gården farm

JP Gulle shop

Art studio

Nationalmuseum Jamtli

Bank

Entrance

Museum

1895 Östersund Market



Defibrillator Hjärtstartare

Defibrillator available in Reception.

10 minute walk to the center of Östersund

Illustration: Anders Suneson

Exhibitions

Welcome to the Jamtli exhibitions!

Take the slide down the tummy of the Great Lake Monster, or try the giggle-lift! Step into the large exhibition hall and see a mighty landscape spread out before you. Stop for a while, let your eyes accustom to the light, and find out what the exhibitions are all about... If you wish, there are audio guides available in the museum's front desk.

- 1 Aajeh – a Sami spring.** A walk around the mountains will take you through the Sami year to experience Sami culture and reindeer herding. You begin your journey when the mountain birch is in bud. Later, in the short summer and autumn there is the reindeer slaughter and the processing of the meat and pelts. In the turf hut, you are invited to sit down to listen to a Sami life story, and below the mountain Nils Thomasson's beautiful Sami photos are on show.
- 2 The Vikings.** The Överhogdal tapestries are the best preserved Viking tapestries in existence, and date from between 1040 to 1170 AD. The original tapestries are displayed at Jamtli, and they really are in a surprisingly

good condition. As an introduction, there is a slide show about the tapestries, and an exhibition about the Vikings creates the right ambience for the display. Nine wooden figures embody the history of Jämtland in the Viking era, each surrounded by a themed display – food, building, jewellery, hunting, religion ...

- 3 The travelling farmers.** Can you see the travelling farmer's horse and sledge? In this exhibition young and old alike can get a feel of what it was like to travel to market to sell furs, grouse, butter and cheese. It was a long journey for the Jämtland farmers who travelled all the way to Norway and to areas around Stockholm in order to make a living in the harsh climate of this barren, mountainous region.
- 4 The Hunters.** A little girl is cleaning fish in the Stone age exhibition, which describes how people in Jämtland and Härjedalen lived some 5,000 years ago. How did they hunt, what did they eat, and what did their clothes look like?
- 5 In the days of the travelling farmers.** How did people live in the 17th, 18th and 19th

centuries? Women and men had completely different duties. In the first room, you will see a woman surrounded by her daily work, a bit further on you will find her husband busy with his tasks. Between the two displays you have to walk through a passage where many dangers lurks... As an expansion of the display showing the man's world, you will find the travelling farmer display, through which you are lead back into the main exhibition hall.

- 6 Bliss and Bounty.** Let your eyes follow the staircase behind the travelling farmers' display. On the second floor, a wedding party is going on, with all that is beautiful and blissful. People met and fell in love in those days too! And the need for celebration was just as great as it is today. In the music and language room, you can listen to 900 different recordings of Sami yoik chants, fiddlers' tunes and shepherd songs. Bliss and Bounty depicts the period between 1750 and 1850. If you continue forwards, you will walk further back in time. Farmers, kings and soldiers in the army of King Charles XII tell us about life during the wars in the 16th and 17th centuries.



Temporary exhibitions

The temporary exhibitions present trends in arts and photography, and sheds new light on interesting historical themes. Guided tours of the temporary exhibitions can be combined with creative activities in Jamtli's studio, led by the museum's art teachers.

Nationalmuseum Jamtli

Nationalmuseum Jamtli is an arena for art and design experiences with painting, sculpture, crafts and design from the Nationalmuseum collections. Here is also the Art studio with room for creative work and reflection with the current exhibition as a starting point.

The exhibitions are regularly exchanged and the activities are a close cooperation between Nationalmuseum in Stockholm and Jamtli in Östersund.



The exhibitions are included in Jamtli's entrance fee.
For current exhibitions, events, times and prices:

www.jamtli.com